



# GAT MONTHLY MEMBERSHIP PROGRESS REPORT

Results as of: 6/30/2021

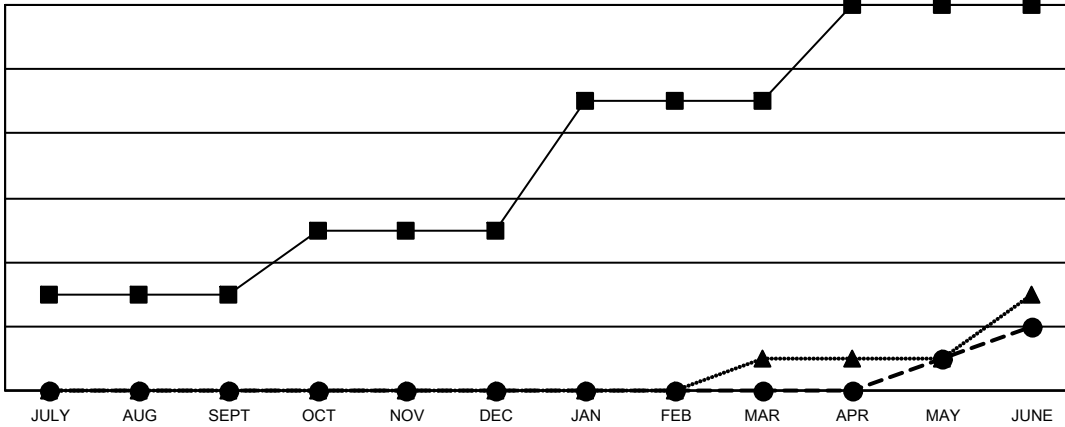
Multiple District 22

LOCATION: MARYLAND

Clubs			
RESULTS FOR 2020-2021			
QUARTER	NEW CLUB GOAL	NEW CLUBS	DROPPED CLUBS
JULY/AUG/SEPT	3	0	1
OCT/NOV/DEC	2	0	1
JAN/FEB/MAR	4	0	0
APR/MAY/JUNE	3	2	2

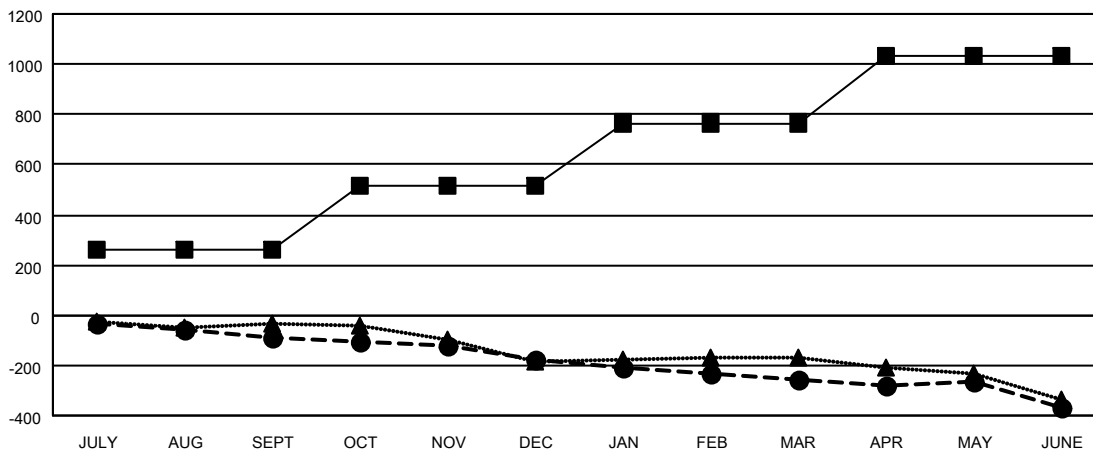
Members			
RESULTS FOR 2020-2021			
QUARTER	MEMBER GROWTH NET GOAL	MEMBER GROWTH ACTUAL	DROPPED MEMBERS ACTUAL (including transfers)
JULY/AUG/SEPT	262	91	164
OCT/NOV/DEC	252	97	172
JAN/FEB/MAR	252	69	132
APR/MAY/JUNE	267	183	278

GOALS AND ACTUAL NEW CLUBS CUMULATIVE



- - CURRENT YEAR GOALS FOR NEW CLUBS
- - CURRENT YEAR ACTUAL NEW CLUBS
- ▲ - LAST YEAR ACTUAL NEW CLUBS

GOALS AND ACTUAL MEMBERS CUMULATIVE



- - MEMBER GROWTH NET GOAL
- - MEMBER GROWTH ACTUAL
- ▲ - LAST YEAR MEMBERSHIP ACTUAL

DROPPED CLUBS: 4	
<u>DROPPED MEMBERS</u>	
DECEASED	161
CLUB CANCELLED	9
OTHER	577
<b>TOTAL</b>	<b>747</b>

94 CLUBS OF 212 ADDED 1 OR MORE NEW MEMBERS

[CLICK HERE FOR CUMULATIVE MEMBERSHIP DATA](#)

<u>GENDER DISTRIBUTION</u>	
MALE	3,790 (64.09%)
FEMALE	2,124 (35.91%)
TOTAL FAMILY UNIT MEMBERS	1,123
FAMILY MEMBERS PAYING HALF DUES	582